

CARE & MAINTENANCE GUIDE



WOLF HOME PRODUCTS®

C A B I N E T R Y

WOLF CLASSIC™

CABINET CARE & MAINTENANCE

Like all investments in your home, your cabinetry will require proper maintenance to keep looking its best. Please be sure to regularly clean and care for your cabinetry using the guidelines below.

CABINET CARE

- Wipe up spills, splatters and water spots as they occur – keep the cabinets dry.
- Clean as needed with a soft, lint-free cloth. Use a mild detergent or soap and warm water.
- Use a fresh cloth when wiping down cabinets. Even when thoroughly rinsed, cleaning cloths may still have remnants of bleach, detergents, grease or other materials which can be harmful to the finish of your cabinetry.
- Avoid using a dishcloth or sponge, which may have remnants of detergents and grease on them.
- Dry surfaces immediately with a soft cloth.
- Never use bleach, ammonia or any cleaning agents that contain any abrasives.
- Never use scouring pads, steel wool or powdered cleaners.
- Do not allow oven cleaners to come in contact with wood finishes.
- Avoid placing small kitchen appliances where heat is directed onto cabinet surfaces.
- Avoid draping damp cloths or dishtowels over cabinet doors – excessive moisture can cause permanent damage.

EXTERIOR FINISH

- The finish on your cabinetry does not require waxing or the application of wood oils to maintain stained finishes. However, if you desire a glossy or shiny appearance on stained finishes, you may apply furniture polish or lemon oil that is recommended for furniture use.
- Before applying polish to your cabinets, be sure they are thoroughly cleaned and dry.
- Be sure not to use any cleaning compounds that may contain alkaline agents, which can negatively impact furniture surfaces.
- If not thoroughly wiped clean, these polishes and oils can either create a hazy look or act as an attractant to dust and dirt.
- Painting in the same room as your cabinetry? We recommend Scotch® Delicate Surface Painter's Tape when preparing to paint around your Wolf Classic cabinetry.

PRODUCT CHARACTERISTICS & VARIATIONS

We are confident that you will be pleased with your purchase of Wolf Classic cabinets. Because your complete satisfaction is important to us, we want you to understand the unique characteristics of the wood species, finishes and processes we use as it relates to finished product appearance.

STAINED FINISHES

Naturally occurring characteristics such as variations in color, grain, mineral streaks and knots are not considered defects. Color variations are a natural occurrence due to substrate, age, character of cabinets and exposure to UV light and sunlight. Such variations and changes are not considered defects. For these reasons, new and/or replacement cabinets may not match display samples and/or existing cabinets. These natural characteristics may also visibly show through the cabinet finish by way of grain, worm holes and knots. This is not considered a defect.

Warping is the bending or twisting of a part due to moisture and atmospheric changes. To measure a door or shelf, lay the product on a flat surface and measure the gap from the surface to the part. The standard allowable tolerance for wood is 1/8" per lineal foot. Materials that fall within specification are considered acceptable, as a part of the natural substrate characteristics.

PAINTED FINISHES

Paint finishes are uniquely different from stained finishes. On all painted products, expansion and contraction are typical due to changes in climate conditions. Due to the normal movement, paint finishes may develop separation lines, finish breaks and seam lines. These will be most notable at stile, rail and panel joints. Joint separations may become more noticeable over time and through season changes.

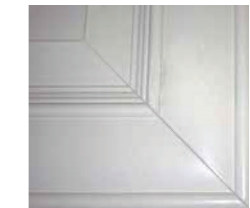
Some of the grain pattern and characteristics (checks, pin knots) as well as seams and joints will remain visible through the paint finish. These are normal and are not considered quality defects. Seam lines and finish breaks are normal characteristics of paint finishes and should not be considered a reason for product replacement. Over time, there may be a slight color shift due to exposure to natural and artificial light.

JOINT FRACTURE

Wood is in a constant state of expansion and contraction, therefore hairline fractures will soon be noticeable at the joints on the cabinet face frame. These will not weaken the finish, but they will be noticeable.

MITER DOORS

When mitered doors are painted with a solid color finish, the joints of the miter door will appear as the wood expands and contracts due to normal environmental changes.



REPRESENTATIVE OF ACCEPTABLE MITER JOINT



REPRESENTATIVE OF ACCEPTABLE JOINT FRACTURE

EXPANSION AND CONTRACTION

Moisture content varies by wood species. Dry climate conditions can cause wood to shrink. Once the cabinets acclimate, the stain or final finish may need to be touched up. If not thoroughly wiped clean, these polishes and oils can create either a hazy look or act as attractant to dust and dirt.

I HAVE READ THE STATEMENTS ABOVE AND ACKNOWLEDGE THE PRODUCT CHARACTERISTICS OUTLINED.

NAME OF END USER

DEALER NAME

SIGNATURE OF END USER

DATE

SIGNATURE OF DEALER REPRESENTATIVE

DATE

DEALER PURCHASE ORDER #

PRODUCT CHARACTERISTICS & VARIATIONS

PAINT FINISH

A painted finish product is a classic look for cabinetry. This finish is applied in the same manner and with the same quality standards that all of our other finishes are applied. It is important for you to understand that the product you have received has unique characteristics that differ from other finishes, but these are not considered quality defects.

There are three general characteristics of painted finishes that differ from other finishes:

1. The cabinetry you have selected is made from high-quality hardwoods and hardwood veneers. These hardwoods, as natural products, have some seasonal movement created by changes in climatic conditions. This is normal in quality wood products. This movement can cause small, hairline cracks. These hairline cracks are normal and are not considered quality defects.
2. With use of the select hardwoods and veneers, some of the grain pattern and wood characteristics (mineral streaks, pitch pockets, checks and pin knots) as well as seams and joints will remain visible through the painted finish. These are normal and are not considered quality defects.
3. As the cabinets age there may be a slight mellowing of the color. This is affected by exposure to natural and artificial light. This is a characteristic of painted furniture and cabinetry. This mellowing of the color is normal and is not considered a quality defect.

THE EFFECT OF LIGHT ON PAINT

While a painted finish is a classic look for cabinets, it is important to remember that colors may appear changed under differing lighting conditions. Note that color does not stand alone and can take on a different appearance in light, whether that light is natural or artificial. Sunlight changes in intensity throughout the day and varies with the sun's position, creating a difference in the appearance of color. Natural light is warmer in the morning, progresses to cooler tones in the middle of the day and then warms again in the late afternoon to evening hours.

Consider the chart below to understand how the look of your painted finish may change throughout the day. In addition to changes in sunlight, the presence of artificial light plays a significant role in the appearance of paint color.

| Direction of Light | Visible Temperature of Light | Color of Light | Duration of Light |
|--------------------|------------------------------|----------------|-------------------|
| North | Cool | Bluish | All day |
| East | Warm | Yellow | Before noon |
| West | Warm | Orange-Red | After noon |
| South | Warm | Orange-Yellow | All day |

- **Incandescent bulbs** generate yellow light that intensifies warm colors but tends to dull cooler colors.
- **Halogen bulbs** produce brighter, white light that is more like sunlight.
- **Fluorescent bulbs** generate cool, blue light that deepens blues and greens but softens warmer colors.
- **Soft white fluorescent bulbs** imitate the warmth of incandescent bulbs, but all colors can appear faded in their light.
- **Full-spectrum fluorescents** produce light that most closely represents natural sunlight.

COMMON DOOR/HINGE ADJUSTMENTS

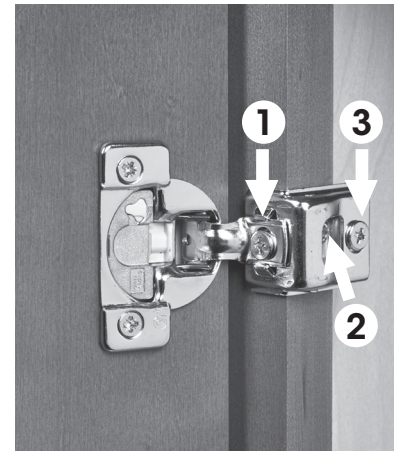
Always use a standard screwdriver for adjustments. Using an electric screw gun may cause serious damage to your cabinetry. The six-way adjustable hinges used on our cabinetry are durable and meant to last for years. However, periodic adjustments may be needed to tighten screws and adjust doors for level. The hinges on all of our door styles adjust the same way.

Tightening the hinge

1. From repeated opening and closing, it might be necessary to tighten **screw 1**, which attaches the door to the frame of the cabinet.

Adjusting doors for level/plumb

1. To raise or lower your door, simply loosen **screw 1** on all hinges attached to that door, and manually raise the door up or down to the desired height. Tightening the screw will set the door in place.
2. To adjust the door forward or backward, adjust **screw 2**. Turning the screw clockwise will move the door back, closer to the cabinet frame. Turning the screw counterclockwise will extend the door away from the cabinet frame.
3. To adjust the door left or right, loosen **screw 3**. Turning the screw clockwise will adjust the door to the left. Turning the screw counterclockwise will adjust the door to the right.



SOFT-CLOSE ADJUSTMENTS



- 3 **Strong** setting for the soft-closing mechanism. Set here for larger or heavier doors with a strong closing pressure. (Factory setting)



- 2 **Medium** setting for the soft-closing mechanism. Set here for average-size doors with normal closing pressure.



- 1 **Light** setting for the soft-closing mechanism. Set here for light or small doors with very little closing pressure.

Each door of Wolf Classic cabinets will come with an integrated soft-close mechanism. Each hinge is adjustable to close to any pressure.

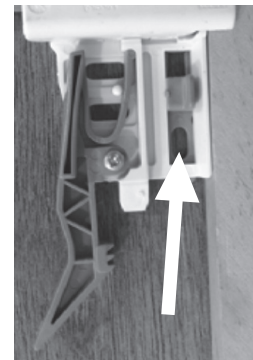
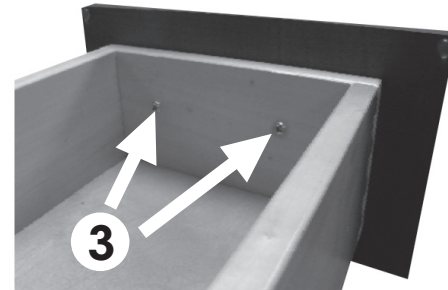
Note: To reset the soft-close damper, move the adjustment switch to "Strong," then to the desired position. Close the door and the soft-close will be reset.

DRAWER ADJUSTMENTS

Due to normal shipping, handling and delivery, it is common for drawers to require on-site adjustments. Common adjustments include assuring that the drawers are square, plumb and aligned with adjacent cabinets.

DRAWER HEAD ADJUSTMENT

1. Remove the drawer box from the cabinet.
2. Loosen, but do not fully remove, either the left or right screw on the back of the drawer head.
3. With the screw loosened, adjust your drawer head to be fully plumb and level.
4. Once the drawer head is set to your liking, tighten the screw, taking care not to allow the screw to follow the previous hole in the drawer head.

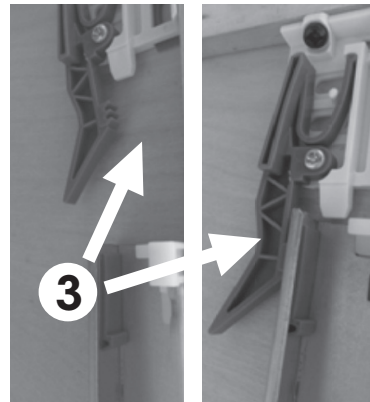
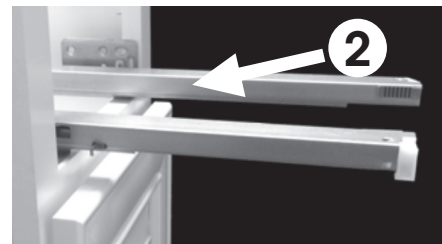
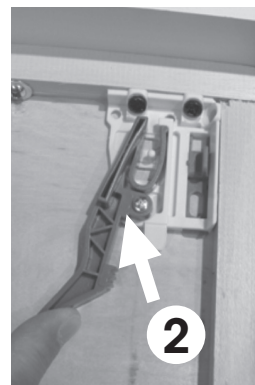
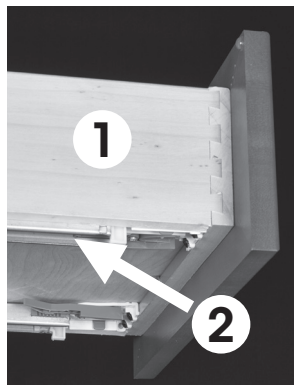


Drawers with undermount glides can also be adjusted at the glide mechanism. This adjustment can be done either by removing the drawer from the glides or by leaving it in place and working underneath the drawer while it is pulled out.

Locate the sliding plate on the mechanism. Slide the plate back and forth on each side, checking for level, until you achieve the desired alignment.

REMOVE DRAWERS FROM UNDERMOUNT DRAWER GUIDES

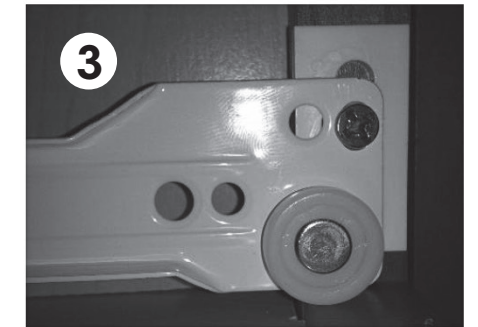
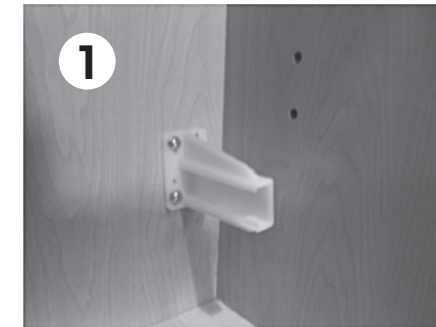
1. Remove drawer from track by fully opening the drawer.
2. Reach under the drawer and squeeze in the locking levers at the same time and remove the drawer from the track.
3. To replace the drawer, set the drawer back on the tracks and push the drawer completely in until you hear a click and the levers have engaged the clips.



PULL-OUT SHELF INSTALLATION/ADJUSTMENTS

Contents:

- (1) Dovetailed wood drawer tray, (1) left-hand drawer glide, (1) right-hand drawer glide,
 (1) Left-hand rear socket, (1) right-hand rear socket, (1) hardware bag including (2) spacers and (6) screws



Step 1:

Install rear sockets by screwing two 1" screws into the rear socket in the back of the cabinet. Install at the desired height of the roll-out tray and be sure to install square with the front of the face frame. Be sure to account for 1/4" for the spacer. Perform on both the left- and right-hand side.

Step 2:

Insert left- and right-handed glides into the rear sockets.

Step 3:

Attach the front of the glide to the front frame of the cabinet, placing the spacer between the glide and the cabinet. Do this for both the left- and right-hand sides.



Step 4:

Measure the distance between the two glides at both the front and back. Ensure these dimensions are equal.

Step 5:

Insert the drawer tray into the installed glides. Ensure that the drawer is completely seated on the track and not just sitting on the outside edge.

Pull-Out Shelf Dimensions

| | |
|-------|-------------------|
| POS12 | 7 1/2" x 21 3/4" |
| POS15 | 10 1/2" x 21 3/4" |
| POS18 | 13 1/2" x 21 3/4" |
| POS21 | 16 1/2" x 21 3/4" |
| POS24 | 19 1/2" x 21 3/4" |
| POS27 | 22 1/2" x 21 3/4" |
| POS30 | 25 1/2" x 21 3/4" |
| POS33 | 28 1/2" x 21 3/4" |
| POS36 | 31 1/2" x 21 3/4" |

RESIDENTIAL PURCHASERS - LIMITED LIFETIME WARRANTY

Wolf Home Products warrants to Original Residential Purchasers that cabinets, drawers, drawer guides and hinges used in the manufacture of Wolf Classic cabinets shall be free from defects in material and workmanship under normal residential use, provided that such Original Residential Purchaser remains the record owner of the home in which the cabinets are installed and uses that home as a primary or secondary dwelling. Original Residential Purchaser means any person who purchases and installs the cabinets in a private residence that is owned and used by that person as a primary or secondary dwelling, or, in the case of a developer or builder purchasing and installing the cabinets in a private residence that is or will be owned and used by the owner or a purchaser as a primary or secondary dwelling, this limited lifetime warranty may be assigned to the owner or initial purchaser of such private residence. Original Residential Purchaser shall not include corporate entities, partnerships, governmental agencies, trusts, religious organizations, schools, condominiums or cooperative housing arrangements. This limited lifetime warranty is not transferable to subsequent purchasers.

COMMERCIAL PURCHASERS - 5-YEAR LIMITED WARRANTY

Wolf Home Products warrants to all Original Commercial Purchasers for five years from the date of original purchase, that cabinets, drawers, drawer guides and hinges used in the manufacture of Wolf Classic cabinets shall be free from defects in material and workmanship under normal use. Original Commercial Purchaser means any person or entity, other than an Original Residential Purchaser, who purchases Wolf Home Products for use in a commercial residential application. This 5-year limited warranty is not transferable to subsequent purchasers.

GENERAL WARRANTY GUIDELINES

Should Wolf Classic cabinets fail during the applicable warranty period due to defects in the material or workmanship under normal use, Wolf Home Products, at its discretion, will repair or provide the parts necessary to replace the defective products. This warranty is applicable only to products used in the United States and is not transferable.

This warranty does not cover products that are misused, abused, mishandled, improperly installed, improperly stored, changed, modified or subject to extreme temperatures or extreme moisture levels, or normal wear and tear. This warranty is not valid for products used for any purpose other than the purpose for which they were originally intended. This warranty does not cover the cost of installation, removal, subsequent damage or transportation of the defective product, regardless of whether the work was performed by a contractor, service company or the consumer.

Variations in color and grain pattern are a natural characteristic of wood. Color changes also may result from exposure to light, heat, smoke, household cleaners, and other elements and environmental conditions that are part of the aging process. These material variations and changes are not covered by this warranty. Wolf Home Products reserves the right to substitute for discontinued product the most similar product in styling, wood species and color available at the time a claim is submitted.

Paint finishes are uniquely different from standard wood finishes. On all wood products, expansion and contraction are typical due to changes in climate conditions. Due to this normal movement, paint finishes may develop slight separation lines, finish breaks and seam lines. With use of selected hardwoods and veneers, some grain patterns and wood characteristics (checks, pin knots) as well as seams and joints will remain visible through the paint finish. Over time, there may be a slight color shift, due to exposure to natural and artificial light. These normal conditions are not considered quality defects and are not covered by this warranty.

THIS WARRANTY IS THE EXCLUSIVE WARRANTY OF WOLF HOME PRODUCTS AND IS IN LIEU OF AND WOLF HOME PRODUCTS DISCLAIMS ALL OTHER WARRANTIES, EXPRESS OR IMPLIED, INCLUDING THE IMPLIED WARRANTIES OF MERCHANTABILITY AND FITNESS FOR A PARTICULAR PURPOSE. Some states do not allow the exclusion or limitation of incidental or consequential damages, so the above limitations or exclusions may not apply to you. This warranty gives you specific legal rights and you may also have other rights that vary from state to state.

This warranty is effective with material delivered on or after January 2, 2024. For materials delivered before January 2, 2024, the 5-Year Limited Warranty shall apply.

HOW DO YOU OBTAIN WARRANTY SERVICE?

This Limited Warranty can also be found in the documentation that accompanied Your Product. To obtain more information regarding the Product or to make a claim under this Limited Warranty, contact one of our authorized dealers or distributors, who will arrange for inspection of the Product. A dated sales receipt as proof of purchase is required to obtain benefits from this Limited Warranty. If you have difficulty obtaining assistance, please write to:

Wolf Home Products
Attention: Wolf Classic Cabinets Warranty
20 W. Market St.
York, PA 17401

**WOLF HOME PRODUCTS®**

Effective January 2, 2024